



## 500' RADIUS MAP

**KHAN CONSULTING INC**  
 1111 N BRAND BLVD STE 403  
 GLENDALE CA 91202  
 (818) 507-1605

**SITE:** 306 E. Harvard Street  
 Glendale, CA 91205

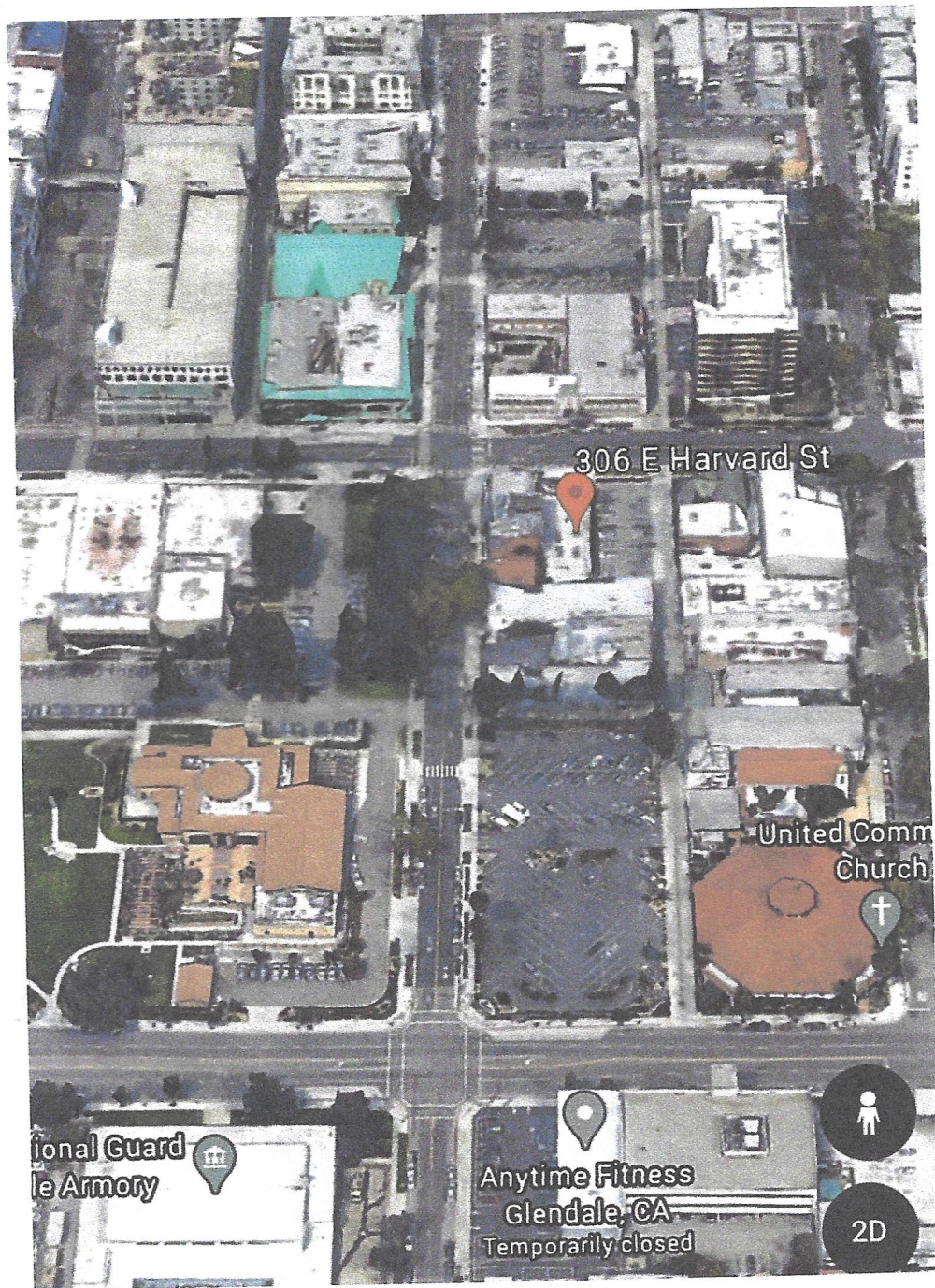
**OWNER:** 200 South Louise, LLC  
 200 South Louise St., 2<sup>nd</sup> Floor  
 Glendale, CA 91205

**CASE NO:**  
**SCALE:** 1" = 200'



**Photographic  
 Survey**





**Aerial View of  
Subject Property**





**#1 Subject Property  
(306 E. Harvard Street)**





**#1 Subject Property  
(306 E. Harvard Street)**





**#1 Subject Property**  
**(306 E. Harvard Street)**





**# 2 (Directly East of Subject Property)**  
**308 E. Harvard Street**





**# 3 (314 E. Harvard Street)**





**# 4      ( 320 E. Harvard Street )**





**# 5 (404 E. Harvard Street)**





**#6 (408 E. Harvard Street)**





#7 (409 E. Harvard Street)





**# 8      (405 E. Harvard Street)**





# 9 (401 E. Harvard Street)





#10 (133 S. Kenwood Street)





#11 (305 E. Harvard Street)





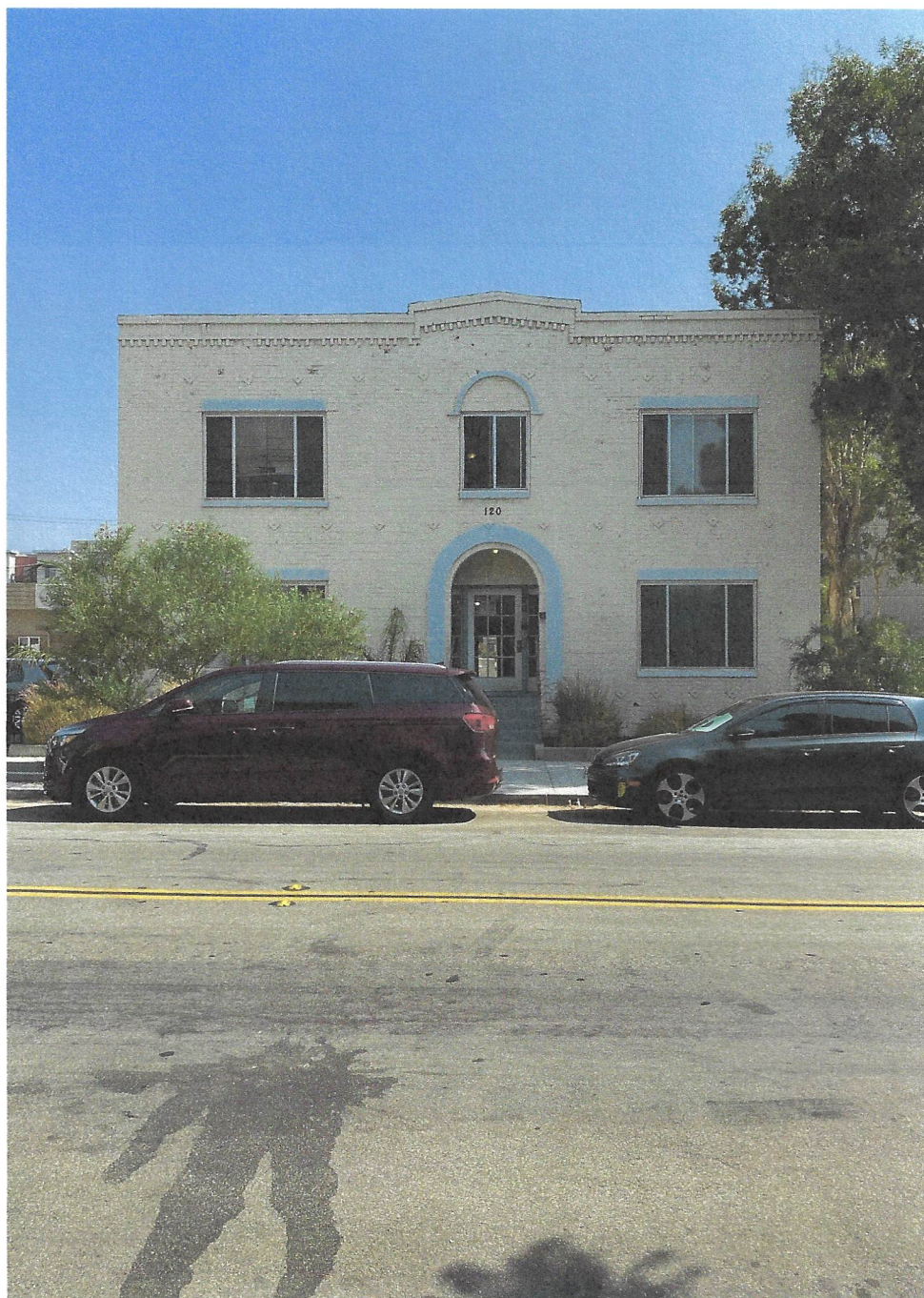
#12 ( 305 E. Harvard Street )





#13 (128 – 132 S. Louise Street)





#14 (120 S. Louise Street)





#15 (116 S. Louise Street)





#16 (114 S. Louise Street)





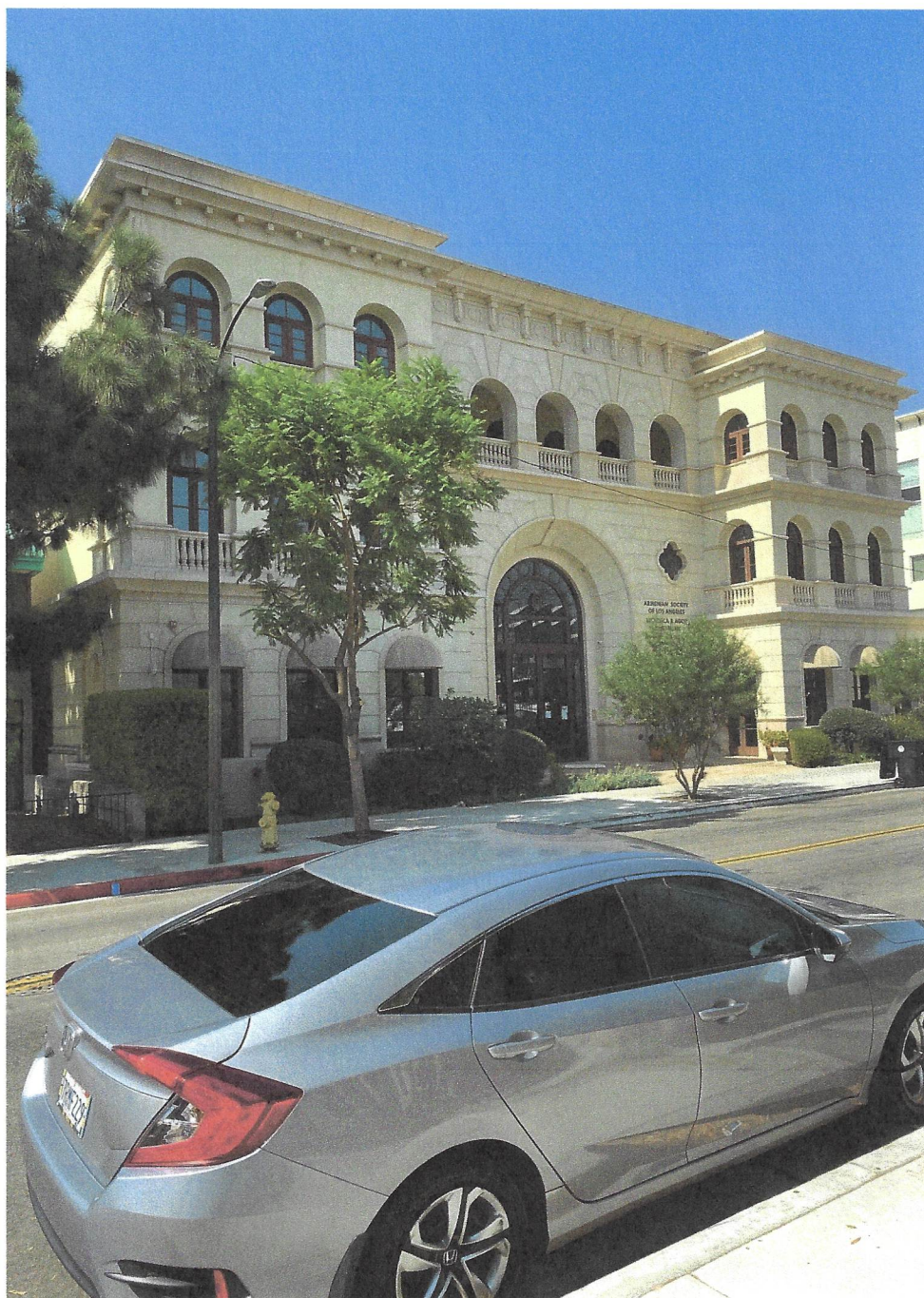
# 17 ( 220 E. Broadway )





#18 (115 S. Louise Street)





#19 (117 S. Louise Street)





**# 20 (125 S. Louise Street)**





**# 21 (Marketplace Parking Structure)**  
**136 S. Artsakh Avenue**





#22 (111 E. Harvard Street)





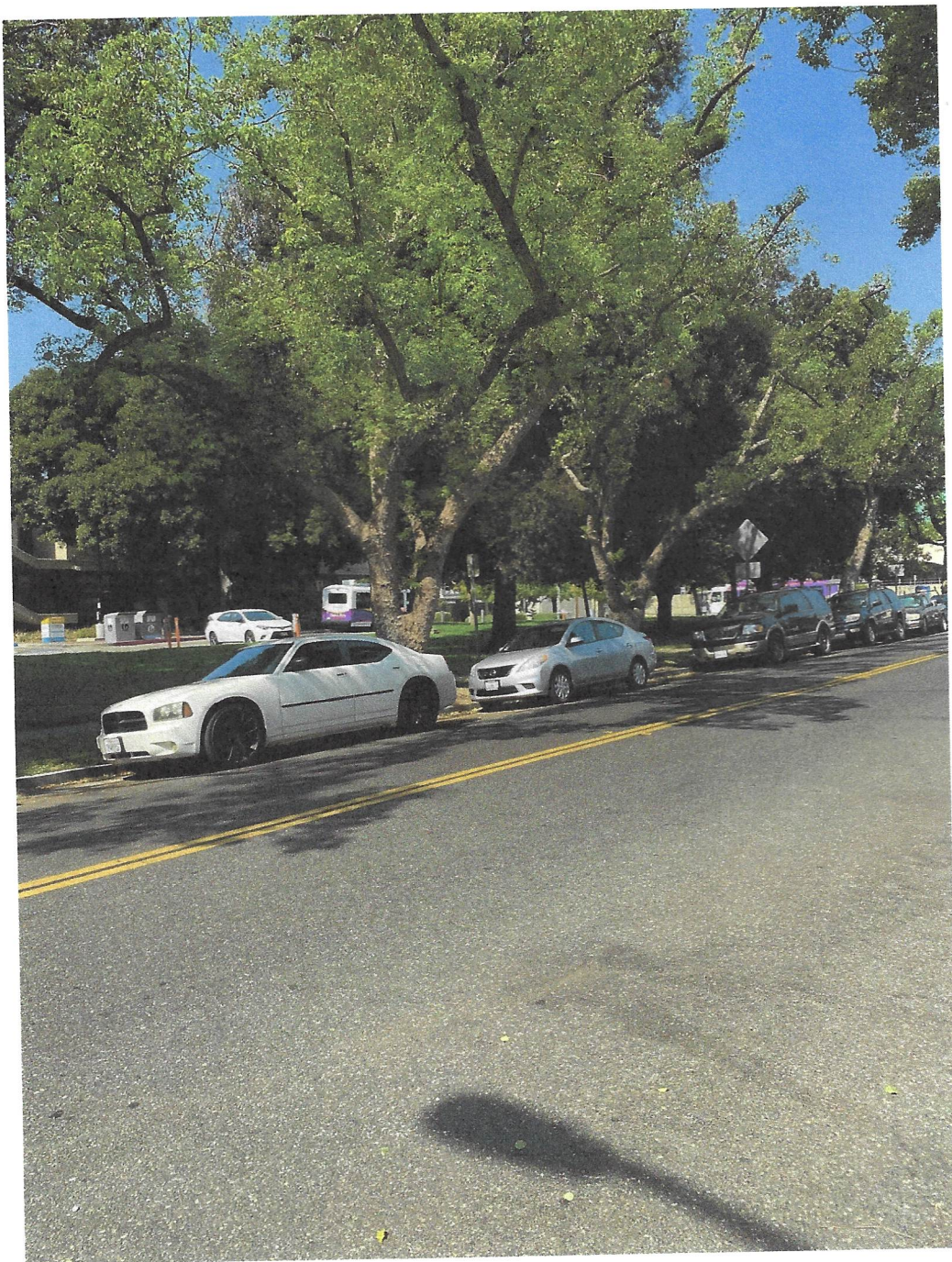
#23 (222 E. Harvard Street)





#24 ( Directly West of  
Subject Property  
, 222 E. Harvard Street )





#25 (222 E. Harvard Street)





#26 (222 E. Harvard Street)





# 27 ( 305 E. Colorado Street )





# 28 (220 S. Louise Street)





**#29 (216 S. Louise Street)**





# 30 (212 S. Louise Street)





# 31 (Directly South of Subject Property)  
208 S. Louise Street